

International Update

Florida Section / District 10 Meeting

Tampa, Florida

November 2015



Institute of Transportation Engineers

A Community of Transportation Professionals

What is ITE?

...a volunteer educational organization of
Transportation Professionals.



Institute of Transportation Engineers

A Community of Transportation Professionals

ITE's Global Network



- Nearly 15,000 members
- 90+ countries
- 10 districts
- 60 sections
- 30 local chapters
- 141 student chapters
- 1 high school chapter



Institute of Transportation Engineers

A Community of Transportation Professionals



**ITE International
Washington, DC**

Florida District 10

Florida Section

Puerto Rico Section

Regional Chapters (8):

Big Bend Florida

Central Florida

First Coast

Gold Coast

Panhandle

Southwest Florida

Tampa Bay

Treasure Coast

Student Chapters (8):

Florida Atlantic University

Florida International University

Florida State University/Florida A&M

Polytechnic University of Puerto Rico

University of Central Florida

University of Florida – Gainesville

University of Mayaguez Puerto Rico

University of South Florida



Institute of Transportation Engineers

A Community of Transportation Professionals

What Can ITE Do For You?

- Industry Resources
- Professional Development
- Networking and Collaboration
- Leadership Opportunities



Institute of Transportation Engineers

A Community of Transportation Professionals

Your Elected International Officers

President
John Kennedy



Past President
Hibbett Neal



Vice President
Paula Benway



Vice President-Elect
Shawn Leight



Institute of Transportation Engineers

A Community of Transportation Professionals

Florida Section/District Leadership

- Andrew Velasquez, President
- Sage Kamiya, Vice President
- Christopher Russo, Secretary
- Oliver Rodrigues, Treasurer
- Pete Yauch, Past President
- Rosana Correa, International Director



Institute of Transportation Engineers

A Community of Transportation Professionals

2015...a year of transition



Institute of Transportation Engineers

A Community of Transportation Professionals

New Headquarters Staff



Jeff Paniati
Executive Director



Chief Operating Officer
Kathi Driggs

Sr. Membership Director
Colleen Agan



Institute of Transportation Engineers

A Community of Transportation Professionals

Technical Councils



Consolidation to
6 Technical Councils



Includes:

- Pedestrian and Bicycle
- Transit
- Optimizing Lane Widths



Institute of Transportation Engineers

A Community of Transportation Professionals

Committees

- Young Member Committee
- Advocacy Committee
- Professional Development Committee
- Student Chapter Committee



Institute of Transportation Engineers

A Community of Transportation Professionals

Young Member Initiatives

- Discounted International meeting registration
- Reduced dues - members 30 and younger
- Increased networking opportunities including YPT



Institute of Transportation Engineers

A Community of Transportation Professionals

Chartered High School Chapter Jinan Foreign Language School -Self-Driving Car Club



President John Kennedy
Jeremiah Liu



Institute of Transportation Engineers

A Community of Transportation Professionals

Rising Stars Program



Institute of Transportation Engineers

A Community of Transportation Professionals

LeadershipITE

- Identify, engage and develop 21st century leaders



www.ite.org/leadership

2016...a year of Transformation



Institute of Transportation Engineers

A Community of Transportation Professionals

2016 International Board Goals

- Rebrand to address:
 - today's community needs
 - today's professional needs
 - diversity and inclusion of **all** Transportation Professionals:
 - safety, mobility, accessibility, ITS, AV/CV, big data technology, freight movement, environment, economic and policy, social scientists, planning, and operations
 - ethnic, gender and age



Institute of Transportation Engineers

A Community of Transportation Professionals

2016 International Board Goals

- Collaborate with other organizations
 - National Association of City Transportation Officials
 - Young Professionals in Transportation
- Improve Membership & Student Services



Institute of Transportation Engineers

A Community of Transportation Professionals

2016 International Board Goals

- Strategic Initiatives Committee
 - Urban/Walkable/Livable Communities
 - ITS/AV/CV & Big Data Technologies
 - Sustainability & Resiliency
 - Transportation Planning/Regional Planning/Policy
 - Global Interests



Institute of Transportation Engineers

A Community of Transportation Professionals

2016 will be a year of
Transformation!



Institute of Transportation Engineers

A Community of Transportation Professionals

So how can you help?



Are you...

- Passionate about our industry?
- A mover and shaker?
- Visionary?
- Do you want to shape our future cities?



Institute of Transportation Engineers

A Community of Transportation Professionals

There are a few items everyone can contribute to...



Institute of Transportation Engineers

A Community of Transportation Professionals

Mayor's Challenge: Safer People & Safer Streets

This past January, Secretary Foxx challenged city leaders to raise the bar for bicyclist and pedestrian safety.

For more information on the Mayor's Challenge, visit <http://www.transportation.gov/mayors-challenge>



Institute of Transportation Engineers

A Community of Transportation Professionals

US Surgeon General's Call to Action

Step It Up! Promote Walking and Walkable Communities recognizes the importance of physical activity for people of all ages and abilities. It calls on the nation to support walking and walkability.

Improving walkability means that communities are created or enhanced to make it safe and easy to walk.



Institute of Transportation Engineers

A Community of Transportation Professionals

FHWA Making Changes

A significant barrier to human-scale, complete streets appears ready to fall...

FHWA is proposing to drop 11 of 13 mandatory standards for streets under *50 MPH*, which will help in the design of federally owned urban streets.

<https://www.federalregister.gov/articles/2015/10/07/2015-25526/revision-of-thirteen-controlling-criteria-for-design-notice-and-request-for-comment#h-12>



Institute of Transportation Engineers

A Community of Transportation Professionals

ITE President call to action?

...what would it be?



Institute of Transportation Engineers

A Community of Transportation Professionals

ITE President call to action?

...what would it be?

*Manny Diaz
Former Miami Mayor
(2001-2009)
Keynote Speaker
ITE Annual Meeting
Hollywood, FL
August, 2015*



Institute of Transportation Engineers

A Community of Transportation Professionals

Paradigm Shift

- Traditional cities – high density, compact and walkable
- 50-60 yrs of exodus from cities and rise of suburbs
- Traffic planning ***gave us highways and less reliance on transit*** making our communities car centric
- ***Glorified the automobile*** causing long commutes, congestion, pollution and human impacts
- A shift has occurred, but we are not there yet.



Institute of Transportation Engineers

A Community of Transportation Professionals

Manny's call to action...

Transportation challenges to transforming Miami:

- ***Lowering speed limits*** – from 40 to 30 or lower
- ***Two way streets*** – calm traffic, better business access, minimizes circuitous traffic
- ***Wider sidewalks/narrow lanes - complete streets*** – essential in making streets walkable, livable and economically sustainable;
- ***Infrastructure improvements*** – provide services to communities without sacrificing the community;
- ***Interstate highways*** – often slice/dice communities



Institute of Transportation Engineers

A Community of Transportation Professionals

Why are cities important?

- Growth of cities/urbanization
- Cities are important economic engines
- Social factors- equity/poverty/affordability/housing
- Environment & health
- Economic sense



Institute of Transportation Engineers

A Community of Transportation Professionals

~~Manny's~~ Paula's Call to Action...

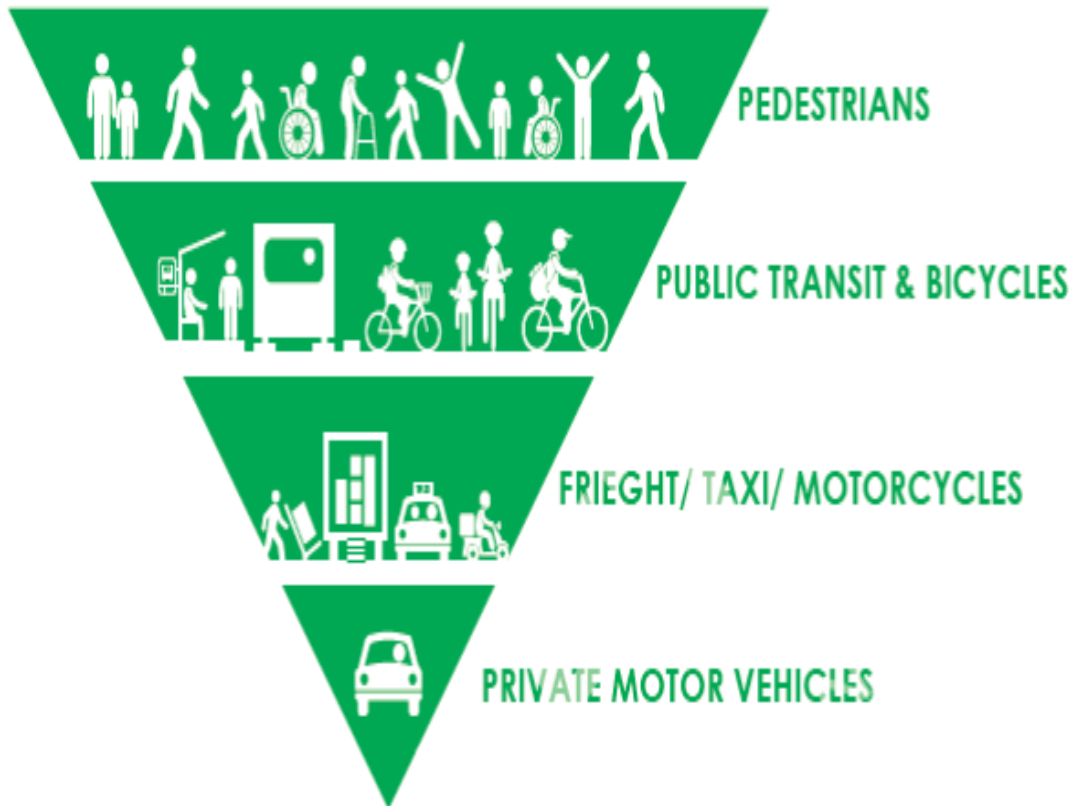
Before you leave this room, consider committing to this goal -- design transportation systems

- around **people** not cars.
- for **all users**; that is safer, eases congestion, is less costly in the long run, and can spur economic development.
- that **alleviates challenges** of economic opportunity, energy, security, climate change and health.
- promotes **clean air**.
- helps people get more physically active by providing **alternatives to driving**.



Institute of Transportation Engineers

A Community of Transportation Professionals



Institute of Transportation Engineers

A Community of Transportation Professionals

Connect for Information/ Provide Feedback



@itehq

community.ite.org



Institute of Transportation Engineers

A Community of Transportation Professionals



THE DISTRICT

The Integrated District

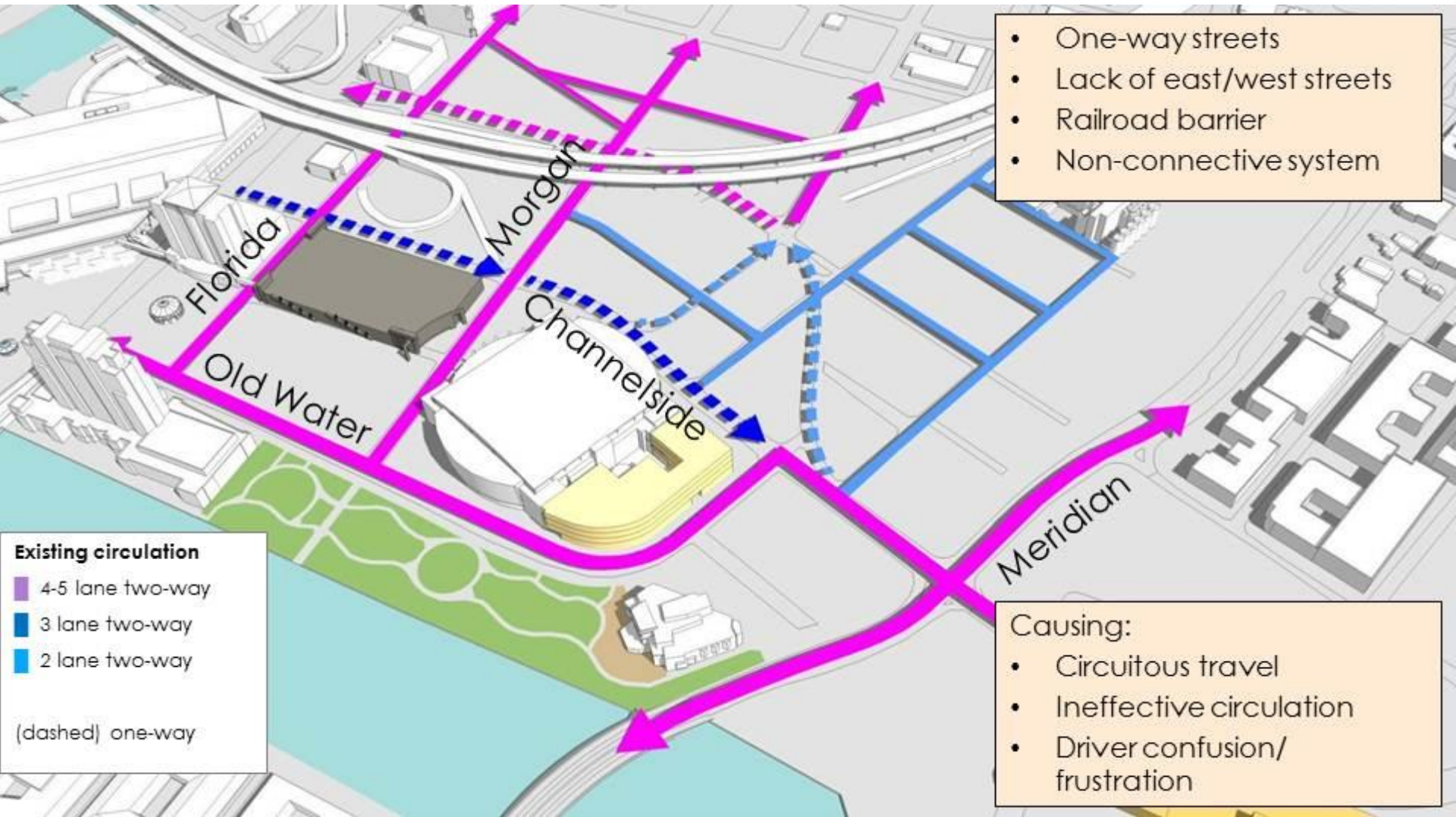
1st Wellness Focus – City Neighborhood in the country!



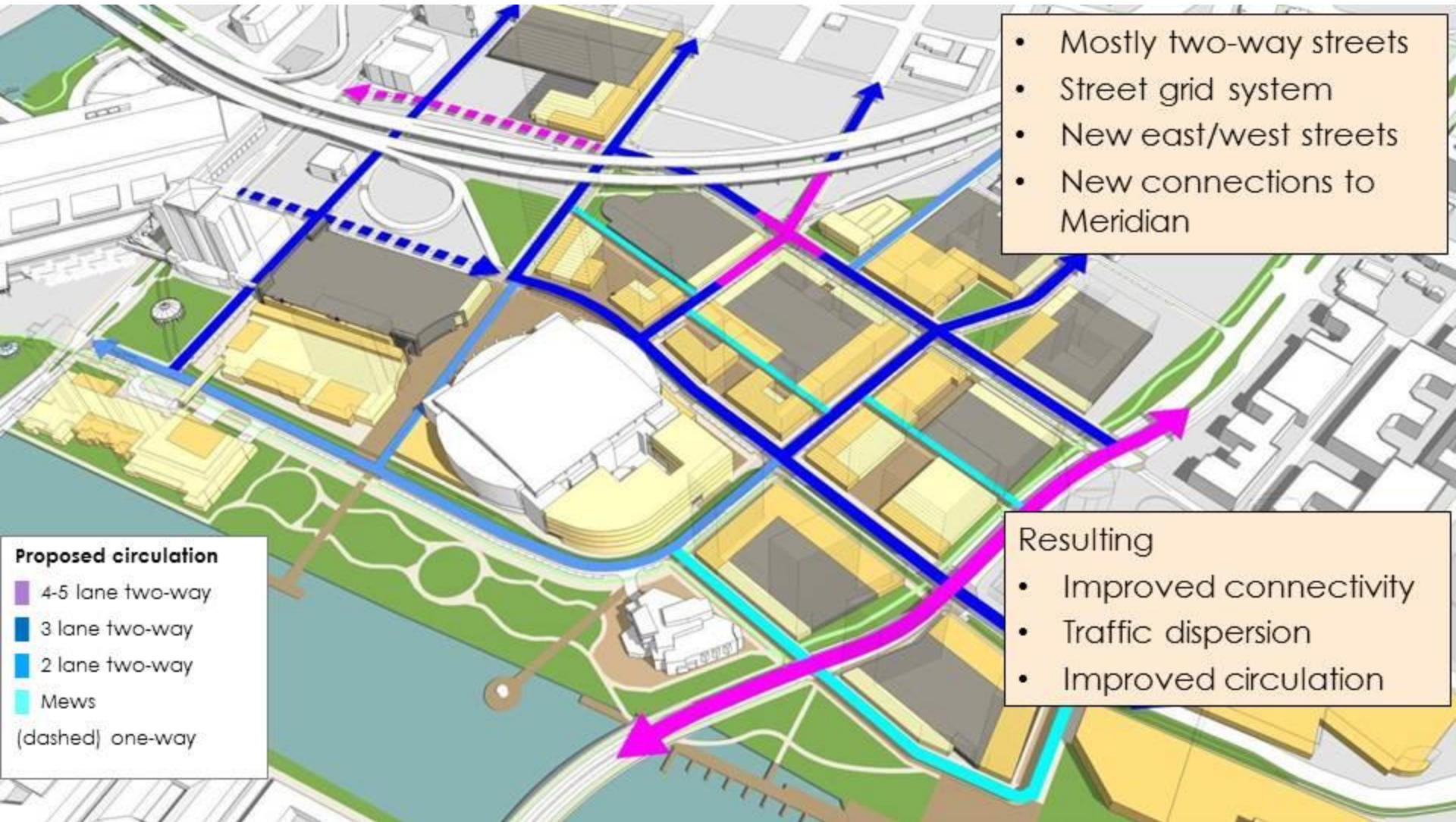
Phase I and II:
2,000,000 square feet of Office
600,000 square feet of Hotel
300,000 square feet of Retail
3,300 Residential (apartment/condo) units

BOR ISLAND

Existing Highway Network



Future Highway Street Network



- Mostly two-way streets
- Street grid system
- New east/west streets
- New connections to Meridian

- Proposed circulation**
- 4-5 lane two-way
 - 3 lane two-way
 - 2 lane two-way
 - Mews
 - (dashed) one-way

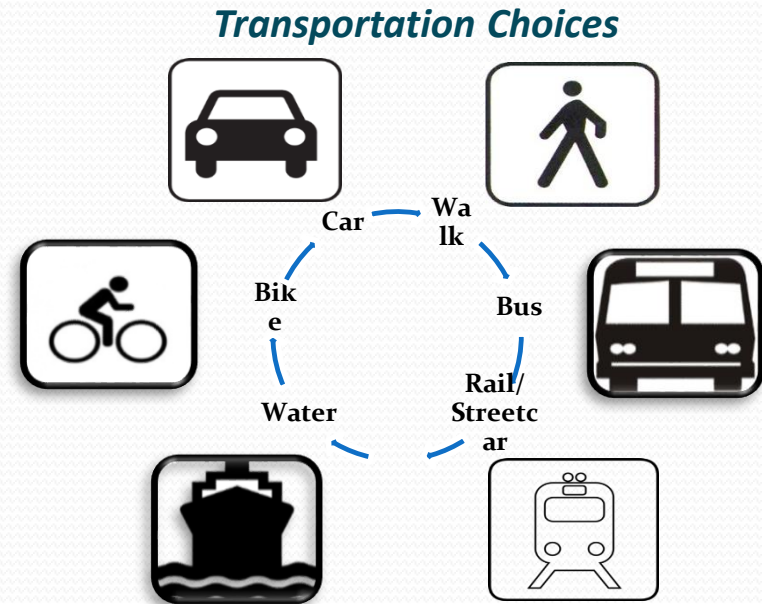
- Resulting**
- Improved connectivity
 - Traffic dispersion
 - Improved circulation

Travel Demand Management Choices

...a set of strategies aimed at reducing demand for roadway travel, particularly in single occupancy vehicles. ...

Strategies include many variations such as:

- Bicycle Facility improvements (facility and amenities)
- Bike/Transit integration
- Car-sharing services (Zip Car) & Bike Sharing & Uber & Lyft
- More Transit options (shuttles, Streetcar, BRT, Light rail, etc.)
- Park & Ride initiatives (suburban commuters)
- Complete Streets implementation
- Traffic calming / context sensitive speeds



Analysis Principles...

Create a walkable, livable network by:

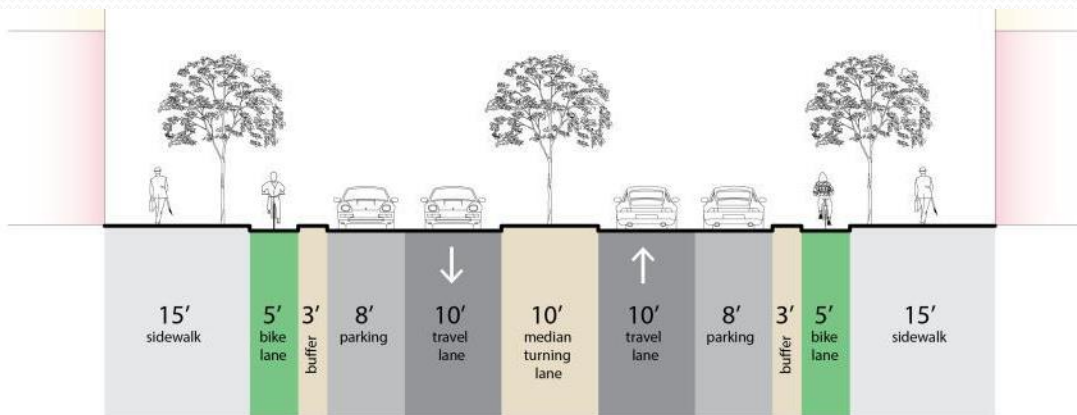
- Creating compact intersections
- Minimalistic geometry
- Provide safe use by all modes
- Narrow lane widths
- Maximize on-street parking
- Provide curb-extensions
- Provide high visibility crossings
- Providing short signal cycles
- Prioritize walking, bicycling, and transit



Analysis Principles...

Create a walkable, livable network by:

- Keep the number of signal phases to a minimum
- Adjust timing for peak and off-peak, special event volumes
- Coordinate signals to the intended urban travel speeds



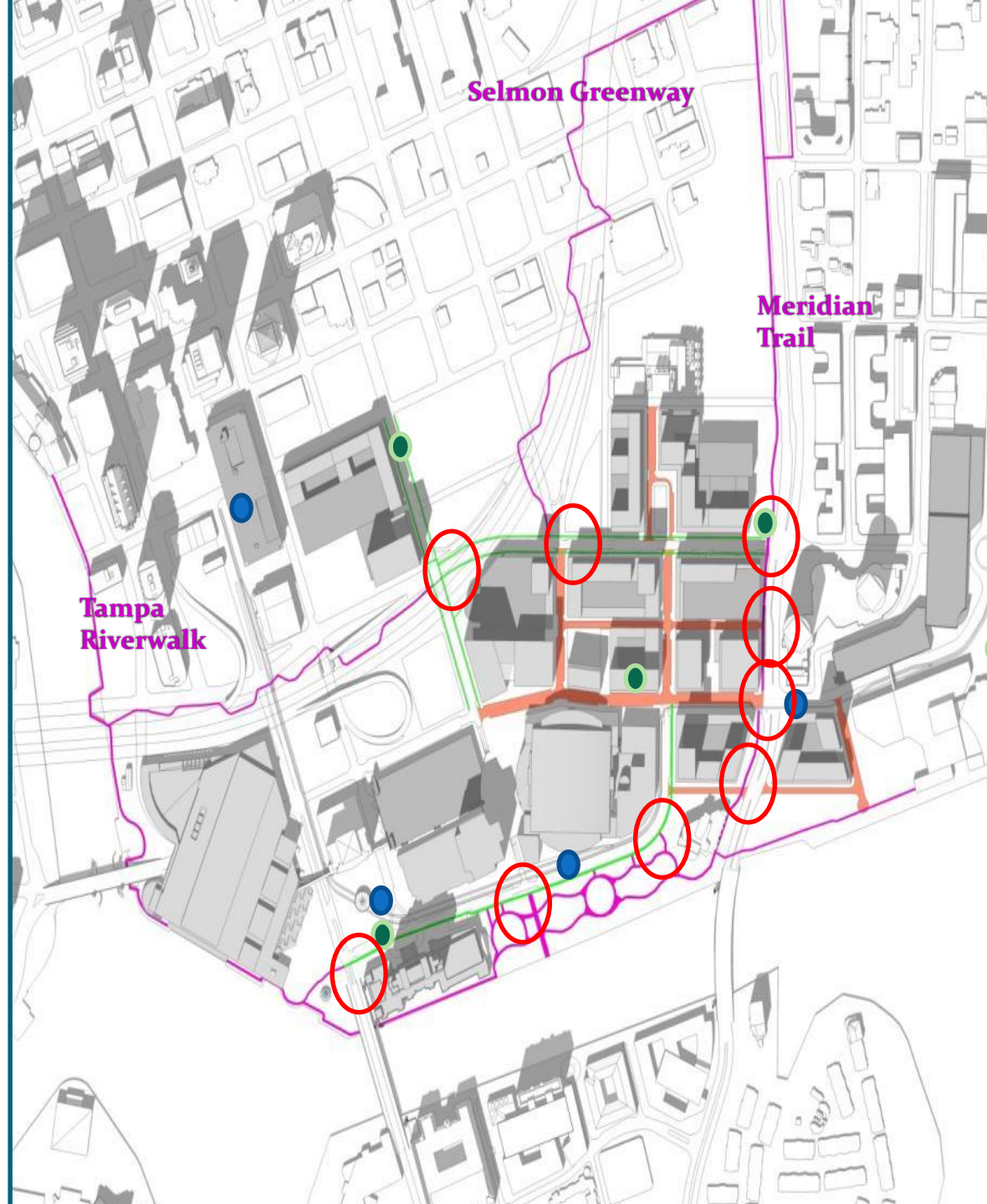
Street Standards

- FDOT Green Book – Chapter 19 – Traditional Neighborhood Development
...defines characteristics and design features to achieve the goals for **compact** and **livable development** patterns reinforced by a context sensitive transportation network...
- FDOT TND Handbook – providing further planning and design guidance for greenfield(new), brownfield, urban infill, and in the **renovation of downtown neighborhoods and business districts.**

Pedestrian and Bicycle Network

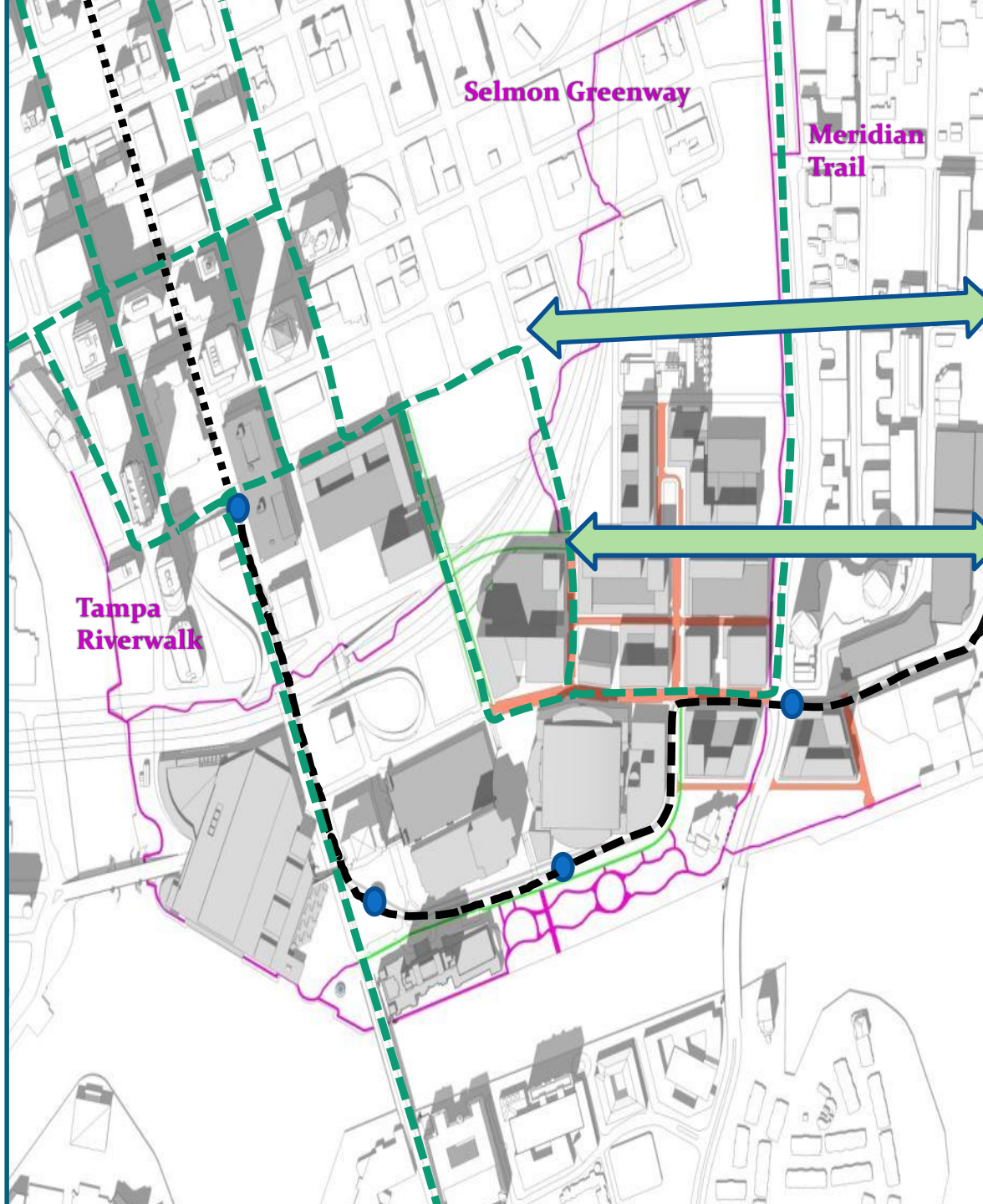
- Mixed use paths
- Buffered bicycle lanes
- Shared ways
- Streetcar stops
- Coast Bike Share Stations
- Connection to existing trails
-

The proposed plan enhances, connects and promotes alternative modes of transportation.



Transit Network

- Mixed use paths
- Buffered bicycle lanes
- Shared ways
- TECO Streetcar stops
- TECO Streetcar corridor
- TECO Streetcar Extension (various routes to Marion Transit Center)
- Hart Transit (In-Town Trolley & Local Service)
- Hart Service Extensions (Cumberland & Whiting Corridors)



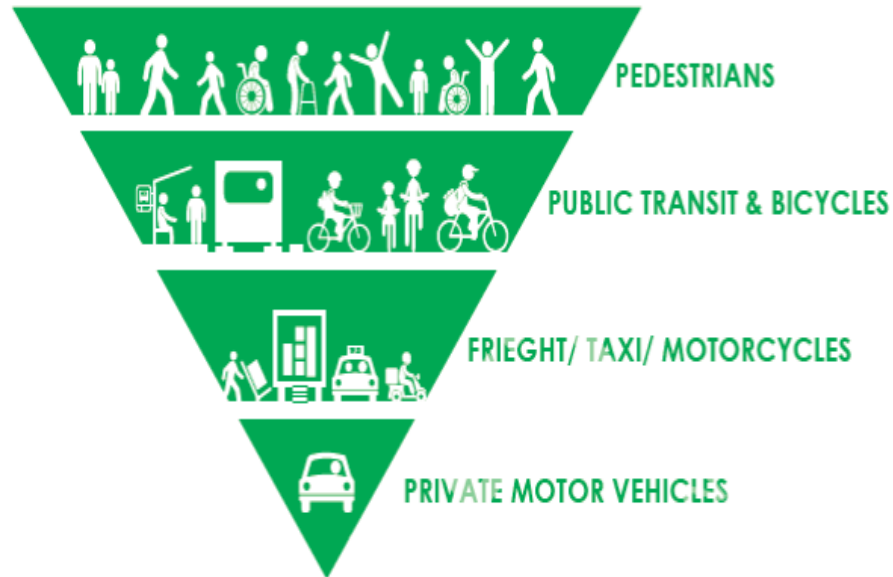
Status... Plan / Design / Build Process

Design due diligence

- Preliminary Traffic Assessment – under review
- Concurrent Phase I Interim Street Design
- Vacating & creating new ROW's
- Initial development parcels

Schedule – Break Ground Spring 2016

Thank you!



Institute of Transportation Engineers

A Community of Transportation Professionals